

REDEEMER REPORTER

REDEEMER LUTHERAN CHURCH & CHILD CARE - JUNE 2014

“WHERE ARE THE CANDY, GIFTS, AND DECORATIONS FOR PENTECOST?”

The ability of our culture to commercialize almost every holiday is truly amazing. When the words “commercialization” and “holiday” are brought together, the first thing that probably comes to mind is Christmas, right? What began in the mid third century A.D. in northern Africa as the Church’s celebration of the birth of the Son of God - Christmas, has become for our culture a time of Santa Claus and purchasing gifts. It has become a crucial part of the business cycle that can make or break a company’s year.

We have just concluded the celebration of another festival that has been commercialized in amazing ways too. Easter is the celebration of the Resurrection of Our Lord. It is the oldest Christian holy day. Easter is a festival celebrated since the very beginning of the Church. Yet for our culture Easter has become focused on a bunny that hides colored eggs. It has become a time to sell chocolate, baskets and fake plastic grass.

However, our culture doesn’t do the third of the major Christian festivals – the Day of Pentecost. It has not created an alternative mythology with which to secularize and commercialize it. It has not created a figure like a fat, jolly man in a red suit or a large bunny that hides eggs. Stores don’t stock special items for the celebration of Pentecost. In fact, the festival of Pentecost comes and goes in the Church year without the world even noticing.

Yet this observation raises a question about the Church today: Our culture doesn’t do Pentecost. Do we? In the case of Christmas and Easter, there are factors outside of the Church that help to raise our awareness about these festivals – even if it is for the wrong reason. Beginning long before Thanksgiving, the stores put up Christmas decorations that remind us Christmas is coming. In the time before Easter, stores put out candy and decorations immediately following Valentine’s Day. Nothing like this occurs before Pentecost. Does this play a role in the fact that today, the Day of Pentecost receives little recognition from many Christians as well?

People are very intentional about coming to Church on Christmas Eve and Easter Sunday. In fact for some people, these are the only two times in the year when they come to church.

However, very few people are intentional about coming to church for the Feast of Pentecost. Perhaps the timing of Pentecost plays some role in this. Pentecost is always fifty days after Easter. Depending on when Easter falls, Pentecost often occurs just as the school year is ending or as summer has just begun.

While all of these things may be factors, it appears that the main reason for our failure to emphasize Pentecost is that we no longer really understand its importance.

For the early Church, Pentecost was first a season before it became a day. The word “Pentecost” described the entire fifty day season that followed Easter. Before too long, the word was applied specifically to the Feast or the Day of Pentecost – the event in which Christ poured out His Spirit upon the Church, beginning first with the twelve apostles at the Feast of Pentecost in Jerusalem.

The life of the Church placed great emphasis on the celebration of Pentecost. From the fourth century on in the early Church, Easter and Pentecost were the two primary days when baptisms were done. Just like Christmas and Easter (Christmas Eve and the Vigil of Easter), Pentecost was preceded by a service on the evening before the day – Pentecost Eve. The Church did this because she understood the importance of Pentecost.

Before His ascension occurred forty days after Easter, Jesus commanded His apostles to remain in Jerusalem



(Continued on page 3)

Pastor	Rev. James Kress
Seasonal Pastor	Rev. Mark Steinke
LHM Ambassador	Rev. Earl Schmidt
Child Care Director	Wendy Horvath
Office Secretary	Deb Horner
Organists	Bill Bowers Lanette Schmidt
Choir Director	Collins Sita
Newsletter Editor	Deb Horner

OFFICERS

President	Rich Kueker
Vice President	Brian Abel
Treasurer	Judy Murphy
Secretary	Betty Clemens

BOARDS

Head Elder	Tim Byrne
Assimilation	Deb Kueker
Property Mgmt	Todd Armstrong
Christian Ed.	Pam Replinger
Human Care	Carol Carlos
Outreach	
School Board	Bill Bowers
Stewardship	
Youth	
Financial Secretary	Karen Kirkland

GROUPS/GUILDS

Ladies Guild	Sally Zierdt
Men's Group	Bob Mortenson
Altar Guild	Carol Sheahan
Coffee Hour	Lisa Kress

STEWARDSHIP

When it comes to stewardship, a favorite Bible verse is the account of the widow's mite (Luke 21:1-4). It's a moving account. Our Lord praises the seemingly small gift of two copper coins given by a poor widow above the abundance of gifts given by the rich, saying, "Truly, I tell you, this poor widow has put in more than all of them" (Luke 21:3). And that is usually where we stop. But the text goes on. "For they all contributed out of their abundance, but she out of her poverty put in all she had to live on" (Luke 21:4).

"She . . . put in all she had to live on." She gave everything. She held nothing back. She trusted that the Lord who made her and all creatures, who gave her everything she had, who redeemed her from her own sin, from death, and the power of the devil, who called her by the gospel and enlightened her with His gifts of Word and Sacrament, would continue to do this. He would provide her with all that she needed for this body and life because that is the character of the God she had.

But this is not why we give small gifts. We give small gifts precisely because we don't trust the Lord to provide for us. We give small gifts because we lack faith in the One who created us, redeemed us, sanctifies and keeps us in the one true faith. We give small gifts because we doubt that God will really give us what we need and desire. We give small gifts because we are not content with what God has already given.

We are not slaves, children of the slave woman, under the Old Covenant, who must give a tithe. We are adopted sons of the free woman. And since we are sons, we are also heirs. And heirs receive the inheritance. For everything is already ours in Christ. And thus moved by the willing spirit of adoption, we do the will of God in financial matters far beyond all that was done by those under the Old Covenant who were forced by legal demands.

So what have you decided to give? How do I decide what to give? Let the Scriptures be your guide.

We are to give proportionally to what we have received from God's giving to us (Luke 12:48; 1 Corinthians 16:1-2, 2 Corinthians 8:12). And what proportion is that? We are free, for we are not slaves but sons. Nevertheless, ten percent, the amount demanded for those under the Old Covenant, is a good starting point, unless there is a reason not to. For we have received more from God in Christ, and we are free now to give more also. So use ten percent unless there is a reason to use five percent or fifteen percent.

Continued on page 3...

“WHERE ARE THE CANDY, GIFTS,continued from page 1

until they received the Holy Spirit. Our Lord promised, “But you will receive power when the Holy Spirit has come upon you, and you will be My witnesses in Jerusalem and in all Judea and Samaria, and to the end of the earth” (Acts 1:8). When this event occurred, Peter told the crowd that it was a fulfillment of the prophet Joel’s prophecy, “And in the last days it shall be, that I will pour out My Spirit on all flesh” (Acts 2:17). Peter proclaimed that this event was a sign that the end-times had begun.

The outpouring of the Holy Spirit began a new era as Jesus Christ extended His saving work into the world through the work of the Spirit. Jesus had promised on the night of His arrest, “But when the Helper comes, whom I will send to you from the Father, the Spirit of truth, who proceeds from the Father, He will bear witness about Me” (John 15:26). Our Lord said, “He will glorify Me, for He will take what is mine and declare it to you” (John 16:14).

It is the Spirit who creates faith in Christ, for Paul tells us “... no one can say, ‘Jesus is Lord’ except in the Holy Spirit (1 Corinthians 12:3). It is through the work of the Spirit that we are able to call upon God as Father. Paul says, “For you did not receive the spirit of slavery to fall back into fear, but you have received the Spirit of adoption as sons, by whom we cry, ‘Abba! Father!’ The Spirit Himself bears witness with our spirit that we are children of God, and if children, then heirs—heirs of God and fellow heirs with Christ, provided we suffer with Him in order that we may also be glorified with

Him” (Romans 8:15-17).

The Holy Spirit was the agent who brought about the incarnation as the Son of God was incarnate by the Holy Spirit of the virgin Mary. The Spirit was the One who was active in raising Jesus from the dead. And the Holy Spirit is also the One who will be at work in raising us from the dead. Paul wrote, “If the Spirit of Him who raised Jesus from the dead dwells in you, He who raised Christ Jesus from the dead will also give life to your mortal bodies through His Spirit who dwells in you” (Romans 8:11).

All of these things are directly tied to the incarnation, death, and resurrection of the Son of God, Jesus Christ. The end-time salvation that was begun in Christ – the “now, but not yet” of our salvation – is made present for us through the work of the Holy Spirit. The unique end-time work of the Holy Spirit is tied to the unique end-time work of the Son. At the celebration of the Day of Pentecost, we rejoice in the fact that God’s Gospel work is being extended through the work of the Holy Spirit, whom Christ poured out upon the Church. The work of the Holy Spirit creates and sustains faith in us now, and points us to the return of Christ and the resurrection that God will work through the Spirit on the Last Day. A blessed Pentecost Day and Season to all.

In His Service,
Pastor Kress

STEWARDSHIP...continued from page 2

But you have not been set free to give nothing. See that you excel in the grace of giving (2 Corinthians 8:7)! We are not free to live selfishly outside the Gospel, without regard for God who gives us all good gifts, without generosity for our neighbor who needs us and our gifts, without supporting the community of faith in which we live, without care for our spiritual fathers and those who teach and help raise our children in the faith, without resources for the poor and needy—in short, we are not free to live unto ourselves, hoarding what God has given us only for us. For love is the fulfillment of the law (Romans 13:10). And the sum of the law is this: Love God and love your neighbor (Matthew 22:34–40). We love because He first loved us. We give because He has given to us.

Luther once said “Possessions belong in your hands, not in your heart” (LW 14:240). There is a reason your ten fingers spread apart. You catch with your hands God’s gifts for what you need so that the rest may fall through your fingers to your neighbors—your family, your friends, your community, your church.

CHURCH COUNCIL MINUTES FOR APRIL 2014

PRESENT: Pastor Kress, Rich Kueker, Todd Armstrong, Tim Byrne, Karen Kirkland, Pam Replinger and Betty Clemens

The meeting was called to order at 6:15 p.m. by President Rich Kueker.

Pastor Kress opened the meeting with prayer.

MINUTES of the March 10, 2014 meeting were presented. PAM MADE A MOTION TO ACCEPT THE MINUTES AS PRESENTED. TODD SECONDED. MOTION CARRIED.

CALENDAR for May was presented. The following changes were made: Additions: Thursday, May 1 at 7:00 pm-Public Exam for Catechumens; Sunday, May 4, Confirmation Day; Sat. May 10th; LWML Rally, Parish Fl, 9:00 - 2:00; Tuesday May 13-6:00 PM Board of Education; and 7:00 p.m. Vision Path Meeting; Sunday, May 18-Sunday School Party; and Newsletter Deadline; Thursday, May 22-6:00 PM Child Care VPK Graduation; Deletions: May 15, June Newsletter Deadline; Sunday May 25th 9:15 AM Sunday School; Change Thursday May 22 Board of Com. & Parish Fellowship from the 22nd to the 29th.

REPORTS

PASTOR: Report attached.

PRESIDENT: No Report

BOARD OF ELDERS No Report

- Tim thanked everyone for their prayers for his recent surgery. He also thanked the pastors for all the extra work they have been doing.
- The results for the Golf Tournament for the Child Care netted \$4,315.74 so far. The Committee wishes to thank everyone who helped. These funds will allow payment of 6 scholarships.

TREASURER'S REPORT: Report attached

HUMAN CARE BOARD: Report attached

PROPERTY MANAGEMENT: Report attached

ASSIMILATION: No Report

COMMUNITY & PARISH FELLOWSHIP: No Report.

CHRISTIAN EDUCATION: No Report.

SCHOOL BOARD: Report attached.

UNFINISHED BUSINESS:

Pest Control: Debbie will call Hughes to question cancellation of service and see if they will be coming anymore. All the estimates were reviewed. Ban-A-Bug will be called in to meet with them prior to making a final decision. Voting will be done by e-mail to save time.

NEW BUSINESS:

LOTS ON ACCESS ROAD: Laura Lorraine, member and Realtor, was invited to attend our meeting. After discussion, a Task Force Team was selected to investigate the purchase of 3 lots and or all 5 lots. The team will be Tim Byrne, Laura Lorraine and Bill Bowers, with Pastor Kress and Rich Kueker. Tim will schedule a meeting after Easter.

AUDIT by Allan Webster was presented in written form. This audit shows the giving is down, not the attendance. We will be \$44,000 short of our budgeted income if this continues. Pastor will contact LCEF regarding their Consecrated Stewards Program and let us know what is involved.

Continued on page 9

The Wittenberg Project



Make your imprint on history; share the Gospel with the world

Our enemy works hard to silence the Gospel and discourage those who would hear it and believe.

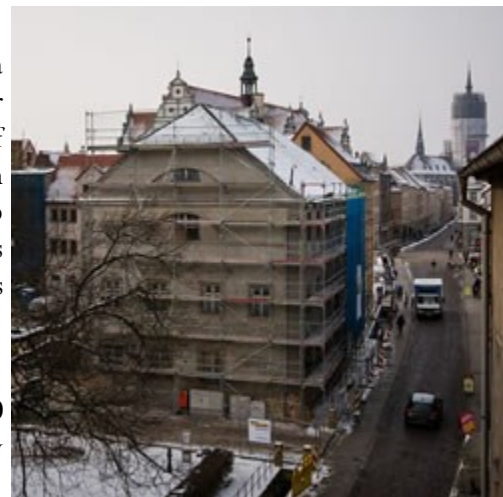
It is time for that to change. It's time for Lutherans around the world to band together in advance of the 500th anniversary of the Reformation in 2017. Whether you're 8 years old or 80, you can help restore a place where Lutherans — and especially those who don't yet know Christ — can gather, learn and boldly confess Christ as Savior. It's called The Wittenberg Project. Work is already underway.

Starting this month and continuing for a full year, your congregations and Lutheran schools can play a special role in sharing the Gospel in a part of the world where it has almost been silenced. And you can do it as part of a historic, once-in-a-lifetime event: the 500th anniversary of the Reformation.

The Wittenberg Project begins with the renovation of the Old Latin School at the center of Wittenberg, Germany, the birthplace of the Reformation. Wittenberg will be the focus of the world's attention over the next several years. The renovated Old Latin School will serve as the venue for faithful Lutheran education and a platform for Gospel proclamation to the thousands of people visiting this historic city.

We invite you to be a partner in this exciting opportunity through a commitment to join the **Reformation 500 Club**, a simple way for congregations and schools to make a powerful difference in the lives of those hungering to hear the Gospel. Those who join the **Reformation 500 Club** will give or pledge to raise \$500 in the coming year to help renovate the Old Latin School. As an incentive, the first 500 congregations or schools to boldly join the **Reformation 500 Club** will have their gifts matched dollar-for-dollar by an anonymous donor!

To learn more about The Wittenberg Project and the **Reformation 500 Club** visit www.thewittenbergproject.org. There you can view videos, follow progress, download Reformation 500 Club fliers and complete the enrollment form. You also can call 888-930-4438 to speak with Patty Mainer, who can answer your questions.



*Reconstruction begins at the Old
Latin School in Wittenberg, Germany*

LUTHERAN CHURCH EXTENSION FUND—LCEF



Celebrate Your Graduate!

Give the gift that builds for your graduate's future while also empowering ministries! Open an LCEF investment for your graduate and help others hear the Gospel.

Consider the following investments for your grad:

StewardAccount®: An interest-bearing investment with convenient access through checks, debit card, or online transactions is perfect for busy lifestyles, yet allows your grad to complete daily tasks with the Lord's work in mind. Interest is competitive and is compounded and paid monthly.

IRA: You know how hard it is to think about retirement when you've just started your career or are beginning college. The gift of an IRA can help set your new grad begin to plan ahead, even when it may be decades away. LCEF has Roth and traditional IRAs.

Term notes: If there are specific plans in your graduate's future for which he or she will need the funds, consider an investment with a maturity date. LCEF offers six-month to five-year notes with a fixed rate, and 30 months to 60 months for floating-rate notes. At the end of the term, they can use the funds or re-invest them.

Saying congratulations with an LCEF investment shows your commitment to helping ministries today, while sharing a gift that will mature with your graduate.

And as always, the Young Investor Club accounts are a super deal for your special child. Great interest rates that can't be beat! Check out the interest rates for all the LCEF products.

It's never too late to start an LCEF account for a child or grandchild. Please see the table in the narthex for more information or ask me if you have any questions.

Remember that the money you invest helps to further the mission and ministries of LCMS congregations and service organizations.

Respectfully submitted,

Laurie Steinke

LCEF Congregational Advocate

LCEF—INVESTMENT INTEREST RATES



Lutheran Church Extension Fund

> where investments build ministry

May 2014

Investment Interest Rates

800-843-5233

lcef.org

10733 Sunset Office Drive
Suite 300
St. Louis, MO 63127

StewardAccount® Certificate

Minimum Investment		Rate	APY
\$100	--	0.125%	0.125%
\$1,000	--	0.250%	0.250%
\$5,000	--	0.375%	0.376%
\$10,000	--	0.625%	0.627%

Floating Term Notes (Minimum Investment \$100)

		Rate	APY
2½ Year (30 Month)	--	0.310%	0.310%
5 Year (60 Month)	--	0.740%	0.742%

Y.I. StewardAccount

Minimum Investment		Rate	APY
\$25-\$999		3.500%	3.557%
\$1,000 and over		0.750%	0.753%

Portion of balance > \$999.99 earns second tier rate.

Family Emergency StewardAccount Certificate

Minimum Investment		Rate	APY
\$25	--	0.750%	0.753%

Balances of <\$10,000 require monthly electronic investments

Fixed Term Notes (Minimum Investment \$500)

		Rate	APY
6 Month	--	0.125%	0.125%
9 Month	--	0.250%	0.250%
1 Year	--	0.375%	0.376%
18 Month	--	0.500%	0.501%
2 Year	--	0.625%	0.626%
3 Year	--	0.875%	0.878%
4 Year	--	1.000%	1.004%
5 Year	--	1.250%	1.256%

Dedicated Certificate

Minimum Investment		Rate	APY
\$100	--	0.125%	0.125%
Custodial accounts for minors: \$25			
\$1,000	--	0.250%	0.250%
\$5,000	--	0.375%	0.376%

HSA FlexPlus Certificate

Minimum Investment		Rate	APY
\$1	--	0.625%	0.627%
\$2,500	--	1.125%	1.131%
\$5,000	--	1.500%	1.510%
\$15,000	--	2.125%	2.146%

IRA Dedicated Certificate

Minimum Investment		Rate	APY
\$100	--	0.125%	0.125%
\$1,000	--	0.250%	0.250%
\$5,000	--	0.375%	0.376%
\$10,000	--	0.625%	0.626%

IRA Jumbo Notes (Minimum Investment \$100,000)

		Rate	APY
5 Year Fixed	--	1.625%	1.635%
60 Month Floating	--	1.115%	1.120%

Cemetery Perpetual Care StewardAccount Certificate

		Rate	APY
\$1,000	--	0.375%	0.376%
\$25,000	--	0.500%	0.501%
\$50,000	--	0.625%	0.627%
\$100,000 +	--	0.875%	0.879%

Congregation Endowment Note (60-Month Floating)

Minimum Investment		Rate	APY
\$1,000	--	1.115%	1.120%
\$10,000	--	1.240%	1.246%
\$100,000	--	1.365%	1.372%

Congregation Endowment Note (5-Year Fixed)

Minimum Investment		Rate	APY
\$1,000	--	1.115%	1.120%
\$10,000	--	1.240%	1.246%
\$100,000	--	1.365%	1.372%

Congregation Certificates (Minimum Investment \$100)

		Rate	APY
Demand	--	0.125%	0.125%
StewardAccount® Certificates			
\$100	--	0.375%	0.376%
\$250,000	--	0.500%	0.501%
\$500,000	--	0.625%	0.627%
\$1,000,000 +	--	0.750%	0.753%

LCEF StewardAccount access features provided through UMB Bank n.a. The StewardAccount is not available to investors living in South Carolina. LCEF is a nonprofit religious organization; therefore, LCEF investments are not FDIC-insured bank deposit accounts. This is not an offer to sell LCEF investments, nor a solicitation to buy. LCEF will offer and sell its securities only in states where authorized. The offer is made solely by LCEF's Offering Circular. Investors should carefully read the Offering Circular, which more fully describes associated risks.

VOLUNTARY PRESCHOOL GRADUATION

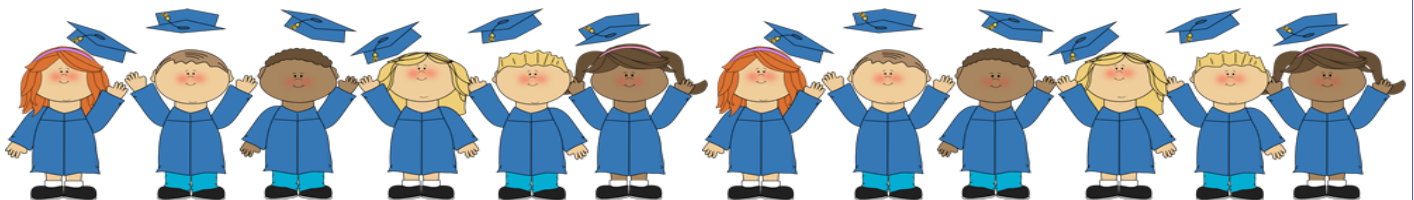


Congratulations to Redeemers VPK Class of 2014!!

We are proud of you and look forward to seeing your future accomplishments as you continue on your way through your life.
May God Bless your efforts.

Do you remember way last fall
when we were only just this tall?
Now look at us, we're up to here
And my we've learned a lot this year
But this is the beginning not the end
Because we made so many friends
We won't be sad
We will remember
We'll see each other in September!

-Unknown



WELCOME NEW MEMBERS

We welcomed five new members, to our Church family, in the month of May. If you haven't introduced yourself to them, please make a point to do so.



Joanne & David Beaster
111432 Baggot Ave.
Englewood, FL 34224
941-525-2087



Gwen & Stephen Wurster
15492 Longview Rd.
Pt. Charlotte, FL 33981
954-531-4781



Deb Horner
151 Michigan Ave.
Englewood, FL 34223
941-468-3923

CHURCH COUNCIL MINUTES FOR APRIL 2014...Con't. from Page 4

LCMS MISSIONS: Since we are no longer supporting Jack and Kathy Carlos, we need to consider another mission. Our member, Dottie LaMere, has a son-in-law and daughter working in the mission field in Asia, waiting to be sent to Sri Lanka. PAM MADE A MOTION TO SUPPORT REV. ROGER JAMES IN HIS MISSION WORK IN SRILANKA. KAREN SECONDED. MOTION CARRIED. This will begin in 2015.

CORRESPONDENCE: Thank you notes were read from Lori Thibideau of Weight Watchers; the family of Bob Boliere; and the sister of Erv Maki.

PAM MADE A MOTION TO ADJOURN. TIM SECONDED. MOTION CARRIED

HURRICANE SEASON PREPARATIONS

June 1st marked the start of Hurricane Season. For members that are new to the area and have not "weathered" a hurricane season, here are a few important and valuable websites for information that could make this season and subsequent ones safer for you and your family.

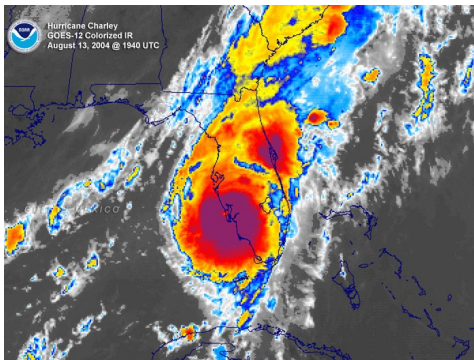
<http://www.nhc.noaa.gov/>

<http://www.wunderground.com/hurricane/>

<http://www.weather.com/>

<http://www.charlottecountyfl.com/Emergency/Hurricane/>

<https://www.scgov.net/AllHazards/Pages/Emergency-Management.aspx>



Scale Number (Category)	Sustained Winds (MPH)	DAMAGE	Storm Surge
1	74-95	Minimal: Unanchored mobile homes, vegetation and signs.	4-5 Feet
2	96-110	Moderate: All mobile homes, roofs, small crafts, flooding.	6-8 Feet
3	111-130	Extensive: Small buildings, low-lying roads cut off.	9-12 Feet
4	131-155	Extreme: Roofs destroyed, trees down, roads cut off, mobile homes destroyed. Beach homes flooded.	13-18 Feet
5	155 - +	Catastrophic: Most buildings destroyed. Vegetation destroyed. Major roads cut off. Homes flooded.	Greater Than 18 Feet

PRAYERS



SHUT-INS: Marjorie Boliere, Helen Perry, and Ruth Sutley.

HEALING: Members: Dolores Altmann, Todd Armstrong, Carl & Betty Bertka, Elma Cancellieri, Pat Finkenbine, Tony Grcevic, Arlene Harden, Bernice Heppner, Erwin Janke, Sandy McGrath, Carolyn Plesner, Sue Poyer, Steve Procuk, Ron Ratzlaff, Michael Sanders, Duwayne Schoeneck, Jerry Schreiner, Earl Stuck, Marie Talley, Fred Toth, Lois Webster, Arlene Wiley, and KC Wright.

Friends & Relatives: Anthony Abreu, Catherine Armstrong, Linny Aspery, Jean Bajner, Gioconda Barlow, Shirley Bloom, Grace Blum, Dennis Burchell, John Burtscher, Georgia Bush, Jack Carlos, Beverly Carper, Diane Carr, Debbie Carr, Esther Clapham, Bobbett Clark, Martin Cressman, Rick Cross, Renee Dempsey, Irene DiTommaso, James Dodge, Barb Dumeah, Chuck & Barbara Ebert, Friends and Family of Dorothylyn Evans, Bruce Everson, Marla Flores, Friends and Family of Annette Foraker, Manual Galan, Glenn Galway, Nancy Gleis, Debbie Harrison, Larry Headun, Claudette Hendershot, Joel Heppner, Walter Heppner, Glory Herget, Robin Hincman, David Hirtle, Larry Hladun, Carol Holmes, Linda Holt, John Hunter, Linda Hunter, Stanley & Lynne Jablonski, Carl Jennejahn, Heather Johnson, Rachel Kagay, John Kearns, Jackie Klinger, Elizabeth Lynn Klopfenstein, Mary Krueger, Jim Lane, Ray Likowski, Denise Line, Sean Maki, Joe Manson, Pete Mogg, Linda Mohr, Mike Morrissey, Kaye Gene Mortenson, Rev. Dana Narring, Maureen Nesvacil, Charles Pentecost Jr., Pete Prior, Mary Raines, Ryan Sheahan, Don Shepherd, Nancy Sly, Debbie Speer Smith, Virginia Stanley, Gary Stokes, Sarah Sturzenbecker, Charles Tolley, Samantha Jo Ann Toth, George Vespa, Steven Walker, Helen Weishaar, Gordan Winkel, Reece Withers, Tim Wright, Angel Zavala and Friends and Family of Steve Zatkalik.

Military Personnel: Mark Baranowsky, Michael Broughton, Brian Jackson, Joshua Jones, Brett Keck, David MacLeod, Michael Monson, Charles D. Weishaar.

Pastor and members of the church are always willing to pray for you, family members and friends. If a loved one appears on our prayer list above, please call pastor or the church office to give us a health update so that we may either keep or remove their name. Thank you.

FROM THE TREASURER'S DESK

CHURCH

Actual April 2014	Budget	Actual April 2013	Budget
Income: \$98,191.87	\$90,142.52	\$99,260.35	\$86,293.61
Expense: \$76,765.71	\$90,145.52	\$74,232.58	\$87,801.24

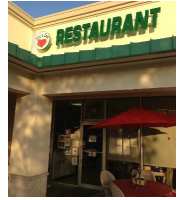
CHILDCARE

Actual April 2014	Budget	Actual April 2013	Budget
Income: \$94,427.43	\$85,162.72	\$84,726.17	\$78,184.24
Expense: \$86,210.32	\$86,210.32	\$78,771.12	\$78,184.18

SINGLES LUNCH

SINGLES LUNCH will be held June 10th, 11:30, at "Food is Love", located by Publix on Dearborn and 776. Several of the singles have gone north but the ones left here still want to go for lunch in the summer. If you are left alone and would like to join us, please come. The sign up sheet is in the Narthex. The last day to reserve is June 8th.

Submitted by: Lessie Kirch



SENIOR FELLOWSHIP

Most of the Thursday group are local, so we still have a full group. We have missed some of our players due to illness. Helen Perry has not been able to attend for some time. She is missed by the group and we all wish her God's speed. Bernice Heppner has been out for awhile due to her hospital and home stay and others have missed a day here and there. Last month, one of our regulars, Sam Levine, had his 99th birthday, which we celebrated with a surprise lunch and cake. Sam is going full blast and no doubt will make 100, God willing. You are welcome if you would like to come and fellowship with us.

Submitted by Lessie Kirch



ENGLEWOOD HELPING HANDS

We give special thanks to the following people for volunteering at Helping Hands during Redeemer's week to send volunteers. Thanks to Dale and Clare Kieselburg, Cathy Mielke, and Joe and Paula Maramonte. The shelves are now full at Helping Hand, but they always need jelly.

Submitted by Dale Whipple



VBS SEASHORE BEACH PARTY!



Join us for the **VBS kickoff beach party** on July 12th, 11AM - 2PM at Englewood Beach under the pavilion. There will be GAMES, FOOD AND FUN! You can also pre-register your child for Vacation Bible School. Join us for this VBS kickoff beach party!!



KRAFT KORNER

The Kraft Korner in the Fellowship Hall has some new items. We have a supply of books on our shelves, if you are a reader, come & take a look. We have some of the latest and they are a lot cheaper than other places. We have some new items on our shelves. Who knows, you might find something you can not live without.

We are in need of items, so please check around and see if there is something you really need to donate. We want to thank everyone that has contributed. The money goes to our Ladies Guild/LWML for a good cause. We appreciate your help.

Submitted by: Lessie Kirch

VISION PATH DEVELOPMENT TEAM WEBSITE

The screenshot shows the website for Redeemer Lutheran Church & Child Care. The address bar shows www.redeemerfl.com. The left sidebar contains a menu with the following items: Home, Lutherans Believe, Worship with Us, Young People's Ministry, Sermons, Choir Hymns, Become a Member, Stephen Ministries, Our Staff, Weekly Bulletin, News, Calendar, Gratitude, Childcare, Links, Vision Path, and Contact Us. The 'Vision Path' link is circled in red. The main content area features the church's mission statement: "Our Mission is to bring Christ to the world...and to living witness and service of His people - the Church." and a welcome message. Below the mission statement, the text reads: "We have been serving the people of the Englewood area since 1961, our Lord, Jesus Christ." The bottom of the page features a blue banner with the text "and Child Care, Englewood," and a section titled "Vision Path Development Team" which is also circled in red. Below this section, a list of team members is provided: Dr. Bud Harty, Chairman; Brian Abel, Vice Chairman; Pastor James Kress, Ex Officio; Rich Kueker, Ex Officio; Patty Lodge; Sara Borza; Tim Byrne; Joe Carlos; Tim Frees; Tricia Hopkins; Sharon Johnson; Ted Simis; and Mary Kay Straw. A list of documents is also provided, including "The Vision Path Experience 8-24-2013", "Vision and Mission for Redeemer 8-4-2013", "Vision Path Development Team: A Historical Perspective 10-24-2013", "Executive Summary: Vision Path Experience Survey 11-2013", "LCEF Vision Path Experience Likes Redeemer 11-2013", "Have We Discovered our Organic Vision 11-2013", "Update: Vision Path Development 12-2013", "A Retro Look into a Crystal Ball 12-2013", "Prioritizing Identified Vision Paths 12-2013", "Moving on With Data Collection 1-2014", "Talking about Tunnel Vision 3-5-2014", "Younger Congregation Members over Time 3-3-14", "What is a Millennial? 5-5-2014", "Five Mile Radius Child Care Population 5-5-2014", "Concerns and Input of High School Students 5-1-2014", "A Concern about Younger Parents 5-5-2014", "Youth Church Presence over the Years 5-5-2014", and "Community Awareness of our Mission and Activities 5-15-2014". A red arrow points from the "Vision Path" link in the sidebar to the "Vision Path Development Team" section. Another red arrow points from the "Vision Path Development Team" section to a box containing the text "Historical Perspective in Chronological Order".

From the home page of the church website:
<http://www.redeemerfl.com>
 Click on VISION PATH in the menu on the left
 Once on the Vision Path Development Team page, just click on any link to view or download the VPDT document

Vision Path Development Team Members:

- Dr. Bud Harty, Chairman
- Brian Abel, Vice Chairman
- Pastor James Kress, Ex Officio
- Rich Kueker, Ex Officio
- Patty Lodge
- Sara Borza
- Tim Byrne
- Joe Carlos
- Tim Frees
- Tricia Hopkins
- Sharon Johnson
- Ted Simis
- Mary Kay Straw

Historical Perspective in Chronological Order

- ▶ [The Vision Path Experience 8-24-2013](#)
- ▶ [Vision and Mission for Redeemer 8-4-2013](#)
- ▶ [Vision Path Development Team: A Historical Perspective 10-24-2013](#)
- ▶ [Executive Summary: Vision Path Experience Survey 11-2013](#)
- ▶ [LCEF Vision Path Experience Likes Redeemer 11-2013](#)
- ▶ [Have We Discovered our Organic Vision 11-2013](#)
- ▶ [Update: Vision Path Development 12-2013](#)
- ▶ [A Retro Look into a Crystal Ball 12-2013](#)
- ▶ [Prioritizing Identified Vision Paths 12-2013](#)
- ▶ [Moving on With Data Collection 1-2014](#)
- ▶ [Talking about Tunnel Vision 3-5-2014](#)
- ▶ [Younger Congregation Members over Time 3-3-14](#)
- ▶ [What is a Millennial? 5-5-2014](#)
- ▶ [Five Mile Radius Child Care Population 5-5-2014](#)
- ▶ [Concerns and Input of High School Students 5-1-2014](#)
- ▶ [A Concern about Younger Parents 5-5-2014](#)
- ▶ [Youth Church Presence over the Years 5-5-2014](#)
- ▶ [Community Awareness of our Mission and Activities 5-15-2014](#)

VISION PATH DEVELOPMENT TEAM WEBSITE

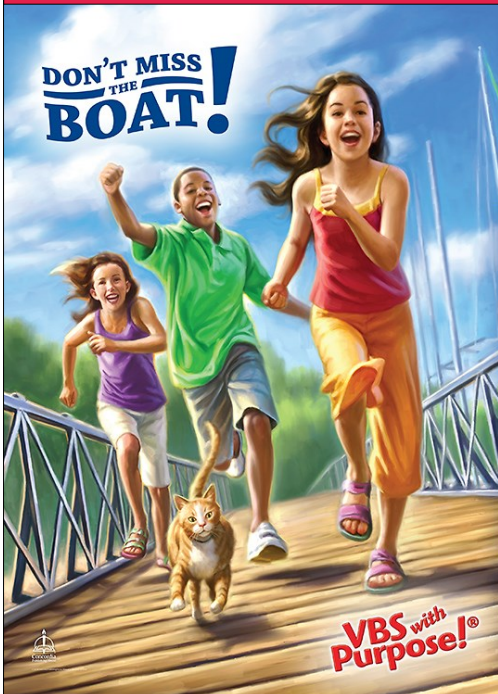
Have you missed anything? Are you looking for a historical overview or perspective of the workings of the Vision Path Development Team? If so...your needs have been addressed! The recently created Vision Path Website is now ready for your perusal and deliberation, updating your collective portfolio, or seeking one or several missing pieces.

Go to the Redeemer Lutheran Church webpage (www.redeemerfl.com). Then click on VISION PATH from the menu on the left. Once on the Vision Path Development Team page, just click on any article to view or download the Vision Path Development document you wish to read and/or print. All documents are for public information and further use. To print copies all or any of the documents, just follow the print instructions for your computer or your hand-held remote electronic device. Below is a list of the current documents.

The Vision Path Experience 8-24-2013
Vision and Mission for Redeemer 8-4-2013
Vision Path Development Team: A Historical Perspective 10-24-2013
Executive Summary: Vision Path Experience Survey 11-2013
LCEF Vision Plan Experience Likes Redeemer 11-2013
Have We Discovered our Organic Vision? 11-2013
Update: Vision Path Development 12-2013
A Retro Look into a Crystal ball 12-2013
Prioritizing Identified Vision Paths 12-2013
Moving on With Data Collection 1-2014
Talking About Tunnel Vision 3-5-2014
Younger Congregation Member over Time 3-3-14
What is a Millennial? 5-5-2014
Five Mile Radius Child Care Population 5-5-2014
Concerns and Input of High School Students 5-1-2014
A Concern about Younger Parents 5-5-2014
Youth Church Presence over the Years 5-5-2014
Community Awareness of our Mission and Activities 5-15-2014



VACATION BIBLE SCHOOL



VOLUNTEERS NEEDED!

*Concordia's Gangway to Galilee
Amazing Grace Adventures
JULY 14th – 18th (9am – Noon)*

Contact Wendy Horvath at 941-475-2631
Or Pam Replinger at 941-473-9018



©123Greetings.com

PUZZLE PAGE ANSWER: Page 16

Therefore all things whatsoever that men should do to you, do ye even so to them. Matthew 7:12

The deadline for the August Newsletter is July 16th

Please have all your submissions sent to redemmerfl@verizon.net OR drop it off at the church office to Deb by the time indicated above.

Thank You!

CLASSIFIEDS

Sales—Rentals	Pineapple Gulf Properties—Glenda McDorman, Owner/Broker (Lessie Kirch's Daughter), 350 S. Indiana Road Englewood, FL 34223. Office: 941-473-0300, Cell: 941-330-7922.
Cleaning Services	Free estimates! Please contact Sheila Murphy at 941-473-1747.
Lawn Care	Call Todd Armstrong at 941-961-7584 for your lawn care needs.
Construction	Call Rob Long! A.C.S., Inc. - Licensed General Contractor - Anything from full remodels, full lanai's, window and door installation and ALL phases of construction. State certified licensed and insured. Please call for a free estimate at 941-475-5008 or 941-232-6606!
Real Estate	SURF & SAND REALTY - Pat Whipple, Realtor 2350 N. Beach Road, Unit 3B, Englewood, 34223. I'd love to help you find your perfect home or sell it, because I really care. Please contact me at 941-882-2725 or 941-474-7755!
For Sale	Electric wheelchair/scooter—only used for two months. In brand new condition. Has battery and charger. You will need to a way to transport the chair. Please contact Deb Horner @ 941-468-3923, if you are interested.

LOST AND FOUND

If anyone is missing any items, namely eyeglasses, gloves, umbrellas, etc., please check the Lost & Found box located in the narthex.

GREETERS

<i>June 1st</i>	<i>Cathy Mielke</i>
<i>June 8th</i>	<i>Russ & Carol Spooner</i>
<i>June 15th</i>	<i>Clare Kiesleburg</i>
<i>June 22nd</i>	<i>Ed & Carol Sheahan</i>
<i>June 29th</i>	<i>Angie Ziegler</i>

Submitted by Assimilation



COFFEE HOUR

<i>June 1st</i>	<i>Gudrun Janke</i>
<i>June 8th</i>	<i>Catherine Byrne</i>
<i>June 15th</i>	<i>TBA</i>
<i>June 22nd</i>	<i>TBA</i>
<i>June 29th</i>	<i>TBA</i>

Submitted by Lisa Kress



PUZZLE PAGE

PUZZLE PAGE THE GOLDEN RULE

by

Bill Schlegl

The Golden Rule is an earthly saying that comes from the Holy Bible. Use the number code to learn of this Bible Verse.

(A = 26, E = 22, I = 18, O = 12, U = 6)

07 19 22 09 22 21 12 09 22

26 15 15

07 19 18 13 21 08

04 19 26 07 08 12 22 05 22 09

07 19 26 07

14 22 13

08 19 12 06 15 23

23 12

07 12

02 12 06

23 12

02 22

22 05 22 13

08 12

07 12

07 19 22 14

Answer on page 14



Summer at Redeemer ChildCare



June 2014

Bible Lessons

Chapel is on Tuesdays
at 3:45

6/3 The Good Shepherd

John 10:1-18

6/10 The Parable of the
Sower

Matthew 13:1-23

6/17 Daniel in the lion's Den

Daniel 6

6/24 The Three Men in the
Fiery Furnace

Daniel 3



Dear God,

You gave us Jesus to
die on the cross. Thank
you for rescuing us!

We love You!

Amen

Birthdays

6/1 Wesley

6/4 Jacob

6/12 Alexis

6/14 Caleb

6/14 Lilyana

6/16 Ava T.

6/25 Danielle



VBS

July 14-18



Volunteers needed!

Please call Pam

Replinger at 941-473-
9018 or Wendy Horvath
at 941-475-2631



Summer is here and we
will be very busy with
pool days, field trips,
the ice cream truck,
special activities and
more.

Special Days in June

6/15 Father's Day



Thank You

Thank you for your
continued support with
the Angel Scholarship
fund.

Submitted by Wendy Horvath

REDEEMER LUTHERAN CHURCH & CHILD CARE
6970 Mineola Road
Englewood, FL 34224

ADDRESS SERVICE
REQUESTED—OPTION 1



NON PROFIT ORG.
U.S. POSTAGE PAID
PLACID, FL
PERMIT 774

REDEEMER LUTHERAN
CHURCH & CHILD CARE

6465 Mayport Street
Englewood, FL 34224

REV. JAMES T. KRESS, SR.

REDEEMER REPORTER

Published monthly for members, Associate Members and
Visitors of Redeemer Lutheran Church a member
congregation of the Lutheran Church Missouri Synod.

WORSHIP SERVICES:

November - April: 8:00 & 10:30 AM

May - October 9:15 AM

Sunday School: 9:15 AM

Bible Study: 9:15 AM

CHURCH OFFICE PHONE: 941-475-2410

*We, the members of Redeemer Lutheran Church are called into the service of our Lord by
accepting His command (Matthew 28:18-20):*

- *Making disciples of all nations / peoples*
- *Baptizing them in the name of the Father, Son and Holy Spirit.*
- *Proclaiming the Gospel and teaching the Word.*

Christ's love for us compels us to serve our neighbors as He served us.